

HALO WAR



Get the strategy guide
primagames.com®

ENSEMBLE
STUDIOS

Microsoft
game studios

! WARNING Before playing this game, read the Xbox 360® Instruction Manual and any peripheral manuals for important safety and health information. Keep all manuals for future reference. For replacement manuals, see www.xbox.com/support or call Xbox Customer Support.

Important Health Warning About Playing Video Games

Photosensitive seizures

A very small percentage of people may experience a seizure when exposed to certain visual images, including flashing lights or patterns that may appear in video games. Even people who have no history of seizures or epilepsy may have an undiagnosed condition that can cause these "photosensitive epileptic seizures" while watching video games.

These seizures may have a variety of symptoms, including lightheadedness, altered vision, eye or face twitching, jerking or shaking of arms or legs, disorientation, confusion, or momentary loss of awareness. Seizures may also cause loss of consciousness or convulsions that can lead to injury from falling down or striking nearby objects.

Immediately stop playing and consult a doctor if you experience any of these symptoms. Parents should watch for or ask their children about the above symptoms—children and teenagers are more likely than adults to experience these seizures. The risk of photosensitive epileptic seizures may be reduced by taking the following precautions: Sit farther from the screen; use a smaller screen; play in a well-lit room; do not play when you are drowsy or fatigued.

If you or any of your relatives have a history of seizures or epilepsy, consult a doctor before playing.

PEGI ratings and guidance applicable within PEGI markets only.

What is the PEGI System?

The PEGI age-rating system protects minors from games unsuitable for their particular age group. PLEASE NOTE it is not a guide to gaming difficulty. Comprising two parts, PEGI allows parents and those purchasing games for children to make an informed choice appropriate to the age of the intended player. The first part is an age rating:

3+

7+

12+

16+

18+

The second is icons indicating the type of content in the game. Depending on the game, there may be a number of such icons. The age-rating of the game reflects the intensity of this content. The icons are:



VIOLENCE



BAD LANGUAGE



FEAR



SEXUAL CONTENT



DRUGS



DISCRIMINATION



GAMBLING



PEGI ONLINE

For further information visit <http://www.pegi.info> and pegionline.eu

EYES ONLY / DO NOT DUPLICATE / EYES ONLY



PLANETARY OPERATIONS MANUAL

THIS MANUAL (AS AMENDED THROUGH 01.03.2531) CONTAINS **EYES-ONLY CLASSIFIED** DATA FOR OPERATIONS, UNSC UNITS AND STRUCTURES, AND ENEMY INTELLIGENCE (DESIGNATED BY TABULAR SECTIONS: "OPERATIONS," "UNSC," AND "COVENANT") PERTINENT TO YOUR THEATER OF COMBAT OPERATIONS.



CERTIFIED

OFFICIAL

DOCUMENT

RECEIVED BY



EYES ONLY / DO NOT DUPLICATE / EYES ONLY

OPERATIONS

UNSC

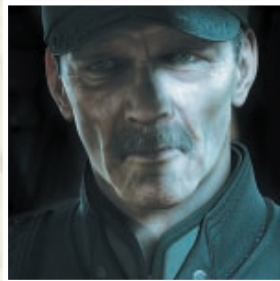
COVENANT

OPERATIONS

CHARACTERS

CAPTAIN JAMES GREGORY CUTTER

Commanding officer, UNSC *Spirit of Fire* CFV-88. A superior battle tactician, but a better logistics officer. He refused command of the UNSC destroyer *Prophecy* in favor of the colonization vessel, *Spirit of Fire*. Upon the outbreak of the Covenant War, Cutter was handpicked by Admiral Preston Cole to helm the *Spirit of Fire* in her new role as center of repair, supply, and forward deployment operations for Battle Group D.



SERINA

The "smart A.I." aboard *Spirit of Fire*, Serina is capable of coordinating concurrent repair and refit operations of twelve UNSC ships of the line as well as organizing the deployment of hundreds of groundside assets among dozens of different drop zones. Her sense of humor is dry and sardonic. She has an understated fascination with human relationships and a theoretical interest in chocolate.



SERGEANT JOHN FORGE

Sgt. John Forge's service record speaks plainly: decorated numerous times for valor and gallantry on the battlefield, but just as many counts for insubordination, conduct unbecoming, and striking a superior officer. He has been promoted five times and demoted thrice. The men in his squad say: "He's the guy you want in the foxhole next to yours... but you'd never introduce him to your sister."



PROFESSOR ELLEN ANDERS

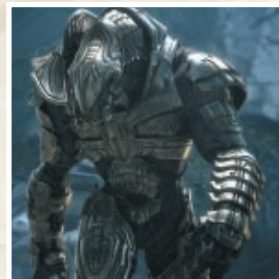
With PhD's in biology, anthropology, and psychology, Prof. Anders is the preeminent expert in theoretical xeno-biopsychology. She has been invited by the Office of Naval Intelligence (ONI) to join their elite research team to investigate possible clues regarding the aliens' xenophobic behavior on the UNSC colony world, Harvest. Anders has an IQ of 180 and was the student of Dr. Catherine Halsey, progenitor of the SPARTAN II program.

*Why mention Halsey here?
she hated me and I hated her.*



ARBITER


Little is known of the Covenant who bears this title. Some theorize that the Arbiter is a battle leader equivalent to a UNSC four-star general. Unlike UNSC generals, however, the Arbiter personally leads military actions, believing anything less is dishonorable. The Arbiter (of which there can be only one at any given time) apparently also has a socioreligious function that extends beyond military protocols.



HEADS-UP DISPLAY




The key on half this stuff is listening for the audio cues!

Visual COM Incoming communications from *Spirit of Fire* and front lines.

Objectives Mission objective displayed and updated here. To see the full list of mission objectives, press .

Selected Units

Selected Unit Icons

 **Population Count** Current/maximum population.
 **Technology Level**
 **Total Resources**

Minimap Displays the game map.



Direction Indicator Navigation aid (Campaign mode only).

 **Selection Crosshair** Used for selecting a unit.
 **Aiming Crosshair** Used for targeting an enemy.

ORDERS

SELECTING

You must select a unit before you can order it to move or attack. Corresponding icons and numbers for selected units appear at the bottom of the screen.

SELECTING A SPECIFIC UNIT

To select a specific unit, place the crosshair over the unit, and then press **A**.



GROUP SELECTION

To select all units that appear on screen, press **RB**.

To select all units on the entire game map, press **LB**.

If you want one particular unit type among those you have already selected, pull **RT** repeatedly to cycle through them.

To select all units of the same type, place the crosshair over a unit, and then double-tap **A**.

To select a group of units near one another, place the crosshair over one of the units, and then press and hold **A** to produce an expanding circle that selects all units within its diameter. You can also drag the circle using **LB** to select additional units.



Remember to pack rad counter!

MOVING

To move your units, select a unit or group of units, move the crosshair to the desired destination, and then press **X**.

Ground units must follow terrain features and circumvent obstacles. Air units can fly over these features unimpeded.

CAMERA

You can change your view of the battlefield by moving **L** (holding **LT** accelerates camera movement).

To rotate the camera, move **R** right or left.

To zoom out or in, move **R** up or down.



Zoom Out



Zoom In

To return to the default view, click **R**.

To move to the last location just mentioned by last alert, press **↶**.

To move/cycle to base location(s), press **↺**.

To move/cycle to next army, press **↻**.

LINE OF SIGHT

Enemy units can be seen only a short distance from your units and buildings.

A black area denotes parts of the game map and minimap your units have not explored. A grayed region denotes portions explored, but where units do not have line of sight.

Note! Do *not* assume that regions engulfed by the fog of war are unexplored by your opponents!

ATTACKING

To attack an enemy, select a unit or group of units, place the crosshair over an enemy unit or building, and then press **X**.

Note! All units are trained to attack without orders if enemies are near, or counterattack if an attack has been launched against them.

SPECIAL ATTACKS

To use a unit's special attack, place the crosshair on an enemy target, and then press **Y**. A unit's special attack may do more damage or have other useful tactical purposes.

For data on specific units' special attacks, see the appropriate sections on units below.

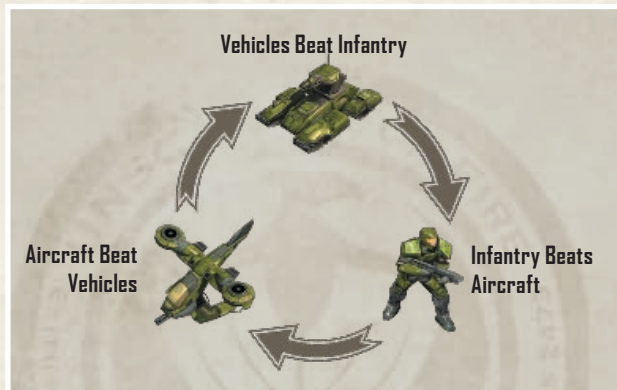


Once launched, a special attack must charge before it can be used again (indicated by the clock-like timer around the on-screen **Y** icon).

If you have multiple units selected, pressing **Y** launches all special attacks for all selected units.

UNIT TYPES

Using the right type of unit is critical. There are three basic types of mainline units: ground vehicles, infantry battalions, and strike aircraft. Each is particularly effective against another specific type of unit.



In addition to mainline units, there are units with specialized functions and specialized combat roles against other unit types (for details, see unit entries in the "UNSC" and "COVENANT" tabular sections).



POPULATION

Supply chain and other factors limit the number of units available in the field.

This is shown as a current/maximum population count in the upper right of the screen. Certain upgrades can increase your maximum population.

Note! Some larger units cost more than one population.

BASES

BUILDING BASES

Your base is where you train (or generate) your army, research upgrades, and gather most resources. There are only a few base locations on any map, so claiming and fortifying them is a key strategy. You may start with an already established base, or you may have to claim a base site.

Each base has a set number of building sites and Turret foundations. You can construct one facility on each building site. To begin assembling your base, place the crosshair over a building site or Turret foundation, and then press **A** to view construction options.



CLAIMING A BASE SITE

If you destroy an enemy base or find a suitable construction site, it will appear as an "outlined" base. If you have sufficient resources to build a base, place the crosshair over the site, and then press **A** to begin construction.

LOSING A BASE

If the central Command Center is destroyed, you lose the entire base and cannot rebuild it for a short time. If you lose your only base, a timer starts; if a new base is not constructed there or elsewhere on the map before the time elapses, you lose the game.

TRAINING & UPGRADING

To train units or initiate upgrades from a base, place the crosshair over the associated building, press **A** to open the Circle Menu, move **1** to select a unit or upgrade, and then press **A**.



Upgrading buildings increases various production capabilities and, in the case of the Reactor (UNSC) and the Temple (Covenant), unlocks new technologies. Upgrading units may increase offensive or defensive powers, or unlock entirely new powers.

Investing in key upgrades is essential for any protracted battle.

Note! Most upgrades require resources and a minimum technology level.

RESOURCES

Resources are required to build units, buildings, Turrets, and research upgrades; they also power many special attacks and weapons. You will enter a tactical situation with initial resources, but you must also obtain resources from your base Supply Pads or by discovering them in the field.

DISCOVERED RESOURCES

Supplies may have been dropped on the battlefield or left from a previous engagement. To collect these supplies, select an infantry or scout unit, and then move them to the resource crates.



RESOURCES SENT TO BASES

Build Supply Pads (UNSC) or Warehouses (Covenant) to begin receiving resources on your base. This is your primary and most efficient way to collect resources. A key strategical consideration, however, is balancing the number of Supply Pads or Warehouses versus other facilities you must build to train infantry, vehicles, or aircraft.



A well-supplied base is a successful base.

MULTIPLAYER

Beyond the solo military Campaign that begins on Harvest, you can test your skills against other opponents—human or Artificial Intelligence (A.I.)—on various maps and under a variety of conditions. There are three ways: 1) pit your skill against A.I.'s in a Skirmish, 2) battle together with a friend in a Co-op Campaign, or 3) engage in multiplayer combat over Xbox LIVE® or via a local area network.

MULTIPLAYER LAUNCH

All three multiplayer types launch from similar lobbies.

Combat Type Shows Xbox LIVE or System Link.

Parameters Set parameters here. May include A.I. difficulty, privacy selections, number of players, game mode, or maps.



Team Selection Area

TEAMS

To select Leader types for yourself or A.I. opponents, select a slot on the Alpha or Bravo Team, and then press **A**. From the Leader Selection Menu, select any of the three UNSC or Covenant Leaders (see pp. 19–20, 31–34), or select a random Leader from the UNSC, Covenant, or both.

When you have made all selections, press **B** to launch the battle.



SKIRMISH

Select Skirmish from the Main Menu, and then select the number of opposing A.I. teams, Leader types, modes, difficulty levels, and the map for your theater of operations. Skirmish may be in Standard or Deathmatch mode.

In Deathmatch mode, all technologies start researched, each team begins with significant resources, teams gain population by claiming bases, and Leader Powers automatically improve over time.

CO-OP CAMPAIGN

You can launch a Co-op Campaign in one of two ways:

1. From the Main Menu, select **Campaign** and then **Co-op**.
2. Select **Xbox LIVE** or **System Link** for Internet or local play.

—or—

1. From the Main Menu, select **Multiplayer**.
2. Select **Xbox LIVE** or **System Link** for Internet or local play.
3. From the Game Type Menu, select **Campaign**.

You and a friend can complete Campaign missions that you previously unlocked in solo mode, or you can play from start to finish through all Campaign missions.



XBOX LIVE

To play over Xbox LIVE, from the Main Menu, select **Multiplayer** and then **Xbox LIVE** to enter the game lobby.

In the game lobby, you can select normal game options such as map type, as well as select a Public, Private, or Co-op Campaign game type. You can also choose privacy options: Open Party, Friends Only, or Invite Only. To invite friends, select a slot in the Team Selection Area, and then press **Y**.

LIVE BENEFITS

Play anyone and everyone, anytime, anywhere on Xbox LIVE. Build your profile (your gamer card). Chat with your friends. Download content (TV shows, trailers, HD movies, game demos, exclusive game content, and Arcade games) at Xbox LIVE Marketplace. Send and receive voice and video messages. Use LIVE with both Xbox 360® and Windows®. Play, chat, and download on both your PC and your Xbox 360. LIVE gives you ultimate access to the things you want and the people you know, on both your PC and your TV. Get connected and join the revolution!

CONNECTING


Before you can use Xbox LIVE, connect your Xbox 360 console to a high-speed Internet connection and sign up to become an Xbox LIVE member. For more information about connecting, and to determine whether Xbox LIVE is available in your region, go to www.xbox.com/live.

FAMILY SETTINGS

These easy and flexible tools enable parents and caregivers to decide which games young game players can access based on the content rating. And now, LIVE Family Settings and Windows Vista® Parental Controls work better together. Parents can restrict access to mature-rated content. Approve who and how your family interacts with others online with the LIVE service. And set time limits on how long they can play. For more information, go to www.xbox.com/familysettings.

SYSTEM LINK

Compete console-to-console with several players on a local area network. For more information, see your Xbox 360 console manual.

To play via system link, from the Main Menu, select **Multiplayer** and then **System Link**. You can either join a game or press  to host a game.

LEADERBOARDS

From the Main Menu, select **Multiplayer** and then **Leaderboards** to see who has the highest-ranked statistics. You can filter the results by various game parameters.

SERVICE RECORD

From the Main Menu, select **Multiplayer** and then **Service Record** to review your performance in single-player and multiplayer games.

UNSC


Established in the latter half of the twenty-second century, the United Nations Space Command (UNSC) is the military branch of the United Earth Government. The UNSC maintains order and defends humanity against all sources of aggression. The UNSC is a disciplined, highly motivated military force.

UNSC LEADERS

In Skirmish or Multiplayer mode, a specific Leader controls battlefield ops: Captain James Cutter, Sergeant John Forge, or Professor Ellen Anders.

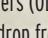
Each Leader has access to a unique power, can produce a special unit, and is allowed a super upgrade not available to other Leaders.

CAPTAIN CUTTER

Leader Power MAC Blast—
Magnetic Accelerator
Cannon blasts an enemy
target (press ).

Unique Unit Elephant—a mobile
infantry trainer.




Super Upgrade Marines can
upgrade to Orbital Drop Shock
Troopers (ODSTs) and
then drop from orbit
anywhere on the map
(press ).



Economy Bonus Cutter's bases
start with more building sites.



SERGEANT FORGE

Leader Power Carpet Bomb (press ).

Unique Unit Cyclops—a multipurpose powered exoskeletal suit.



Super Upgrade Grizzly—a superior version of the Scorpion tank.




Economy Bonus All Supply Pads on Forge's bases start as Heavy Supply Pads.

I think it's best if the sergeant and I just avoid each other. His reputation is quite Stone Age.



PROFESSOR ANDERS

Leader Power Cryo Bomb—freezes enemies in place (press ).



Unique Unit Gremlin—uses an EMP to stun enemy units.



Super Upgrade Hawk—a laser beam upgrade to the Hornet.



Economy Bonus Cost and research time for unit upgrades reduced by half.



UNSC BUILDINGS

UNSC buildings are designated by name and  technology level required to construct (for details, see "Reactor" on p. 22).

FORTRESS

 0

This semipermanent structure dropped from the *Spirit of Fire* contains a Command Center, seven building sites, and four Turret foundations. Other non-primary base facilities, called Firebases and Stations, may also be found, built, and upgraded on a given map.



Units Trained Warthog and unique Leader units—Elephant (Cutter), Cyclops (Forge), and Gremlin (Anders).

Other Base Types Firebase (includes a Command Center, three building sites, no Turret foundations); Station (includes a Command Center, five building sites, four Turret foundations).

TURRET

 0

Fixed gunnery/tracking systems for base defense.

Upgrades May enable one specialized defensive add-on.

Note! Upgrades to more powerful Medium and Large Turrets researched at Field Armory.



SPECIAL ADD-ON

Flame Mortar (anti-infantry)



SPECIAL ADD-ON

Rail Gun (anti-vehicle)



SPECIAL ADD-ON

Missile Launcher (anti-air)



SUPPLY PAD

⚡ 0

Allows you to receive resources from the *Spirit of Fire*.



UPGRADE

Heavy Supply Pad Increases resources gathered over time.



BARRACKS

⚡ 0

Trains infantry units.

Units Trained Marine, Flamethrower, and Spartan.



REACTOR

⚡ 0

Hybrid-fusion Reactor that allows access to greater technologies. Upgrades and some units may require up to four Reactor technology units.



UPGRADE

ADVANCED REACTOR Energy output twice normal (counts as two tech levels).



Note! Upgrade a Reactor or build more Reactors to increase your tech level. Remember: when any of your Reactors are destroyed, your corresponding tech level also drops.

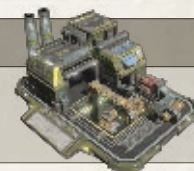
*Reactors on the base?
Remind me not to visit them often.*

VEHICLE DEPOT

⚡ 2

Assembles vehicles.

Units Trained Scorpion, Cobra, and Wolverine.



AIR PAD

⚡ 2

Constructs aircraft.

Units Trained Hornet and Vulture.



FIELD ARMY

⚡ 1

Enables special upgrades.

Note! Also upgrades Leader-specific powers.



SPECIAL UPGRADE

ADRENALINE Boosts infantry speed.



SPECIAL UPGRADE

RESERVES Units train faster.



SPECIAL UPGRADE

MEDIUM TURRET Increases Turret damage/hitpoints.



SPECIAL UPGRADE

LARGE TURRET Increases Turret damage/hitpoints.



SPECIAL UPGRADE

REINFORCEMENTS Increases maximum population.



They will beat their swords into plowshares...

Originally commissioned as a colony ship in 2473. As Outer Colony tensions increased, however, a Magnetic Accelerator Canon (MAC) was added, capable of accelerating low-mass or depleted uranium slugs to a fraction of light speed. When the Covenant War started, *Spirit of Fire* was further repurposed. Vessel bays that once housed prefabricated schools and atmosphere processors now store mobile armories, self-assembling fusion reactors, and other groundside facilities that can be dropped via jet, parachute, and Pelican-directed assist to the front lines.



While the *Spirit of Fire* supplies and supports UNSC front-line troops, it is also a valuable asset providing direct strategic advantages such as orbital bombardment, tactical transportation, and UNSC Leader Powers (see pp. 19–20). To access *Spirit of Fire* abilities, press .

SPECIAL UPGRADE
DISRUPTION AOE ability;
temporarily prevents Leaders
from using
special
powers.



SPECIAL UPGRADE
HEAL Heals units and repairs buildings within a target radius.



SPECIAL UPGRADE
TRANSPORT Orders a Pelican to airlift units to a specified location on the map.



All UNSC units are designated by their names, where trained, and required technology level.

Barracks ⚡ 0



The mainline infantry UNSC unit. It has the most diverse, and arguably best upgrades of any UNSC units.

Starting Special Attack Grenade.

Note! Grenades cannot be used against aircraft, although RPG upgrade special attack can.

FIRST UPGRADE

NEW BLOOD Adds an extra Marine to each squad.



SECOND UPGRADE

RPG Upgrades Grenade to Rocket-Propelled Grenades.



THIRD UPGRADE

MEDIC Adds a Medic to each squad that can heal squad after combat.



ODST

Orbital Drop Shock Troopers—a tougher class of Marine.

Note! Available only if Capt. Cutter is the Leader.



FLAMETHROWER

Barracks ⚡ 0



A counter-infantry unit. Specialized Marine squads carrying napalm-spewing flamethrowers.

FIRST UPGRADE

FLASH BANG Momentarily
stuns infantry
units.



SECOND UPGRADE

NAPALM ADHERENT Allows flame to continue to burn after initial attack.



THIRD UPGRADE

OXIDE TANK Hotter fire increases damage to organic targets.



UNSC AIRCRAFT UNITS

HORNET

Air Pad ⚡ 2

Mainline UNSC air unit. A versatile single-seat, fast attack aircraft armed with a Gatling gun and rockets.



FIRST UPGRADE

WINGMEN Adds Marines riding shotgun to boost damage.



SECOND UPGRADE

CHAFF POD Passive ability; better avoidance of missile fire.



HAWK

Upgrade to Hawk super unit equipped with laser beams.

Note! Available only if Prof. Anders is the Leader.



VULTURE

Air Pad ⚡ 4

UNSC super unit (good against everything). Advanced air-weapons platform that can unleash devastating damage on all targets.

Starting Special Attack Active Barrage.



UPGRADE

MEGA BARRAGE Doubles the number of missile salvos in a barrage attack.



COVENANT

The Covenant is a technologically advanced collective of alien species that controls a large portion of the Orion Arm of the Milky Way Galaxy. Millennia ago, the Covenant were a small, heterogeneous group who banded together for mutual protection. Intervening centuries have interwoven the customs and beliefs of the disparate species into a strong society. The Covenant is a caste-based society regulated by theocratic rule.

COVENANT LEADERS

In multiplayer Skirmish mode, the player controlling a Covenant force selects a Leader to command Covenant minions on the battlefield.

Unlike their UNSC counterparts, Covenant Leaders appear on the battlefield as individual units. In addition to having access to a Leader Power and special units, each Covenant Leader has a personal upgrade path. Also, entire armies can quickly transport to the Leader's location via the Gravity Lift (see p. 37).

If a Covenant Leader is killed, one may be retrained at a base's Temple (see p. 36).

Note! The Covenant Leaders' unique powers cost additional resources on a per-second basis.

The Prophet starts with a Plasma Cannon attack and the Cleansing ability (which calls down an energy beam from an orbiting vessel). Upgrades available at the Temple.

Unique Unit Elite Honor Guard (available at the Command Center).



Blessed Immolation Upgrades to fuel rod cannons for damage increase.



Ancestral Perversion Dual protector units hover near Prophet and defend him.



Divine Absolution Upgrades chair so Prophet becomes a full-fledged flying unit.



Regret's Sentence Medium
cleansing beam which does more
damage.



Regret's Doom Large cleansing beam for even more damage.



Regret's Condemnation



BRUTE CHIEFTAIN

Brute Chieftain starts with Gravity Hammer and Vortex ability (a damage field that can further explode for additional damage). Upgrades available at the Temple.

Unique Units Brutes (available at the Command Center); Brute Chopper (available at the Factory).

COMBAT UPGRADES

Inheritance Adds passive stun ability to normal attacks.



Birthright Chieftain can pull enemies to him during combat.



Destiny Adds an area of effect (AOE) stun to Gravity Hammer.



SPECIAL UPGRADES

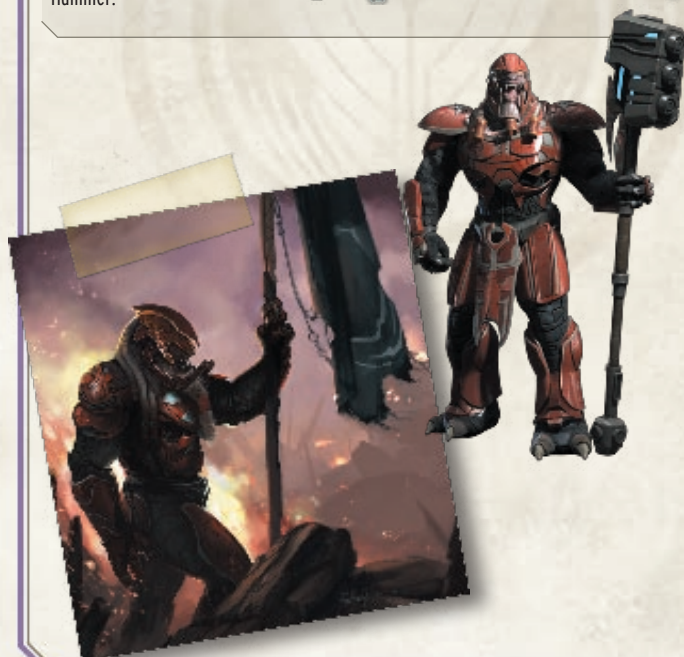
Tsunami Increases Vortex damage and AOE.



Hurricane Increases Vortex damage and AOE.



Singularity Increases Vortex damage and AOE.



THE ARBITER

The Arbiter starts with dual energy swords and Rage special attack. Upgrades at Temple.

Unique Unit Suicide Grunts (available at the Command Center).



COMBAT UPGRADES

Fiendish Return Arbiter armor reflects a portion of incoming damage back to attacker.



Vicious Blades Adds damage to attack and increases damage reflected.



Ghastly Vision Permanent cloak enabled and damage reflection increased.



RAGE UPGRADES

Defiant Rage Health partially restored with every inflicted fatality.



Spiteful Rage Rage mode costs less to maintain.



Blinding Rage Rage damage massively increased, also increases the attack power of surrounding allies.



COVENANT BUILDINGS

Covenant buildings are designated by name and ⚡ technology level required to construct (for details, see "Temple" on p. 36).

Note! Covenant bases are similar to UNSC bases except technology is researched at a Temple and they include two buildings not found on UNSC bases: Shield Generators and Gravity Lifts.

CITADEL



This Covenant base contains a Command Center, seven building sites, and four Turret foundations. Other non-primary base facilities, called Outposts, can also be found, built, and upgraded. The beginning base in Skirmish mode, the Keep, can be upgraded to a Citadel.

Units Trained Scarab and unique Leader units—Elite Honor Guard (Prophet), Brutes (Brute Chieftain), and Suicide Grunts (Arbiter).

Other Base Types Outpost (includes a Command Center, three building sites, no Turret foundations); Keep (includes a Command Center, five building sites, four Turret foundations).

TURRET



Fixed gunnery/tracking systems for base defense.

Starting Special Attack May enable one specialized counteroffensive ability.

Note! Upgrade to more powerful Medium and Large Turrets at the Temple.

SPECIAL UPGRADE

SECONDARY PLASMA MORTAR
(anti-infantry)



SPECIAL UPGRADE

SECONDARY FUEL ROD
(anti-vehicle)



SPECIAL UPGRADE

SECONDARY HEAVY NEEDLER
(anti-air)



WAREHOUSE



Allows you to receive resources.



UPGRADE

BLESSED WAREHOUSE Increases resources gathered over time.



TEMPLE



Allows access to greater technologies. Availability of some upgrades and units may require up to three Temple technology levels.

Note! If the Temple is destroyed, the technology level resets to zero, although it will be restored to its previous level if another Temple is built. Once a Temple is built, a Leader unit appears.



SPECIAL UPGRADE

AGE OF DOUBT Increasing technology upgrades.



SPECIAL UPGRADE

FOLLOWERS Increases population maximum.



SPECIAL UPGRADE

SHIELD OF THE FORERUNNERS Increases recharge rate of all energy shields.



SPECIAL UPGRADE

AGE OF RECLAMATION Increasing technology upgrades.



SPECIAL UPGRADE

LEADER UPGRADES For details, see pages 32–34.

SPECIAL UPGRADE

MEDIUM, LARGE TURRET Increases the power/hitpoints of Turrets.



These Covenant structures still need a lot of study.

HALL



Trains infantry units.

Units Trained Grunts, Jackals, and Hunters.



FACTORY



Assembles vehicles.

Units Trained Ghost, Wraith, Locust, and a unique Leader unit—Brute Chopper (Brute Chieftain).



SUMMIT



Constructs aircraft.

Units Trained Engineer, Banshee, and Vampire.



SHIELD GENERATOR



Protects your buildings with an energy shield. Multiple shields can be added to a single base.



GRAVITY LIFT



Transports units to the Leader unit. Each base automatically has a Gravity Lift.

To transport troops to your Leader, select unit(s), place the crosshair over the Gravity Lift, and then press **X**. You can also activate Leader Recall or Global Rally Point by placing the crosshair over the Gravity Lift and then pressing **A** to access the building's menu.

Note! You cannot transport the Scarab via the Gravity Lift.



BRUTE

Command Center ⚡1

Special forces unit. Heavy-assault infantry with powerful Brute guns.

Note! Available only if the Brute Chieftain is the Leader unit.



FIRST UPGRADE

JUMP PACK Enables jump jet ability.



SECOND UPGRADE

ELECTRIC SHOT Brute shot causes electrical stun damage.

**COVENANT VEHICLES****GHOST**

Factory ⚡0

Scout unit that starts with twin frontal guns (can collect supplies from resource crates).



FIRST UPGRADE

BOOSTED RAM Enables the Boosted Ram special attack to overrun enemies.



SECOND UPGRADE

STRAFE Can better dodge incoming grenade and rocket attacks.



THIRD UPGRADE

SCOUT SHIELD Adds an energy shield to deflect some incoming damage.

**BRUTE CHOPPER**

Factory ⚡0

Fast assault scout unit (can collect supplies from resource crates).

Starting Special Attack Run Over.

Note! Available only if the Brute Chieftain is the Leader unit.



FIRST UPGRADE

AUTOCANNONS Adds front-firing 35mm guns for increased damage.



SECOND UPGRADE

STABILIZERS Improves autocannon accuracy and damage.



THIRD UPGRADE

RAMMING TARGET Greatly increases Run Over damage and decreases damage taken.

**WRAITH**

Factory ⚡1

Main Covenant battle tank with good speed and excellent range. Armed with plasma mortar and turret.



FIRST UPGRADE

HEAVY SHIELD Adds energy shield which deflects some incoming damage.



SECOND UPGRADE

SCORCH Special attack leaves a bubbling plasma splash on the ground for added damage.



THIRD UPGRADE

PLASMA MODULATOR Large boost to plasma mortar damage.



Limited Warranty For Your Copy of Xbox Game Software ("Game")

Warranty.

Microsoft Corporation ("Microsoft") warrants that this Game will perform substantially as described in the accompanying manual for a period of 90 days from the date of first purchase. This limited warranty is void if any difficulties with the Game are related to accident, abuse, virus or misapplication. Microsoft does not make any other warranty or promise about the Game.

Your remedies.

If you discover a problem with the Game covered by this warranty within the 90 day period, return it to your retailer along with a copy of the original sales receipt. Your retailer will, at its option, (a) repair or replace the Game, free of charge, or (b) return the price paid. Any replacement Game will be warranted for the remainder of the original warranty period or 30 days from receipt, whichever is longer. To the extent that you could have avoided damages by taking reasonable care, Microsoft will not be liable for such damages.

Statutory rights.

You may have statutory rights against your retailer which are not affected by Microsoft's limited warranty.

IF YOU DID NOT PURCHASE THE GAME FOR YOUR PERSONAL USE (THAT IS, IF YOU ARE NOT DEALING AS A CONSUMER)

The following terms apply to the maximum extent permitted by applicable law.

No other warranties.

Microsoft and its suppliers disclaim all other warranties and conditions, either express or implied, with respect to the Game and the accompanying manual.

Limitation of liability.

Neither Microsoft nor its suppliers shall be liable for any damages howsoever caused arising out of or in any way related to the use of or inability to use the Game, even if Microsoft or any supplier has been advised of the possibility of such damages. In any case, Microsoft's and its suppliers' entire liability is limited to the amount actually paid by you for the Game.

For questions regarding this warranty contact your retailer or Microsoft at:

Microsoft Ireland Operations Limited
Sandyford Industrial Estate
Blackthorn Road
Dublin 18
Ireland

Customer Service Numbers

	PSS*	TTY**
Australia	1 800 555 741	1 800 555 743
Österreich	0800 281 360	0800 281 361
Belgique/België/Belgien	0800 7 9790	0800 7 9791
Česká Republika	800 142365	
Danmark	80 88 40 97	80 88 40 98
Suomi/Finland	0800 1 19424	0800 1 19425
France	0800 91 52 74	0800 91 54 10
Deutschland	0800 181 2968	0800 181 2975
Ελλάδα	00800 44 12 8732	00800 44 12 8733
Magyarország	06 80 018590	
Ireland	1 800 509 186	1 800 509 197
Italia	800 787614	800 787615
Nederland	0800 023 3894	0800 023 3895
New Zealand	0508 555 592	0508 555 594
Norge	800 14174	800 14175
Polska	00 800 4411796	
Portugal	800 844 059	800 844 060
Россия	8 (800) 200-8001	
España	900 94 8952	900 94 8953
Saudi	800 8443 784	
Slovensko	0800 004 557	
Sverige	020 79 1133	020 79 1134
Schweiz/Suisse/Svizzera	0800 83 6667	0800 83 6668
South Africa	0800 991550	
UAE	800 0 441 1942	
UK	0800 587 1102	0800 587 1103

*PSS – Product Support Services; Produkt-Supportservices; Services de Support Technique; Produktsupporttjenester; Tuotetuki; Produktsupport; Υποστήριξη προϊόντων; Supporto tecnico; Serviço de Apoio a Clientes; Servicio de soporte técnico; Serviços de Suporte ao Produto; Služby podpory produktů; Dział wsparcia technicznego produktu; Müszaki termékátogatás; Služby produktové podpory; Службы поддержки продуктов.

**TTY – Text Telephone; Texttelefon; Service de télécommunications pour les malentendants; Teksttelefon; Teksttelefon; Tekstpuhelin; Τηλέφωνο κειμένου; Texttelefon; Trasmissione telefonica di testo; Linha especial para dispositivos TTD (telecomunicações para deficientes auditivos); Teléfono de texto.

For more information, visit us on the Web at www.xbox.com

Information in this document, including URL and other Internet Web site references, is subject to change without notice. Unless otherwise noted, the example companies, organizations, products, domain names, e-mail addresses, logos, people, places, and events depicted herein are fictitious, and no association with any real company, organization, product, domain name, e-mail address, logo, person, place, or event is intended or should be inferred. Complying with all applicable copyright laws is the responsibility of the user. Without limiting the rights under copyright, no part of this document may be reproduced, stored in or introduced into a retrieval system, or transmitted in any form or by any means (electronic, mechanical, photocopying, recording, or otherwise), or for any purpose, without the express written permission of Microsoft Corporation.

Microsoft may have patents, patent applications, trademarks, copyrights, or other intellectual property rights covering subject matter in this document. Except as expressly provided in any written license agreement from Microsoft, the furnishing of this document does not give you any license to these patents, trademarks, copyrights, or other intellectual property.

The names of actual companies and products mentioned herein may be the trademarks of their respective owners.

Unauthorized copying, reverse engineering, transmission, public performance, rental, pay for play, or circumvention of copy protection is strictly prohibited.

© 2009 Microsoft Corporation. All rights reserved. Microsoft, Ensemble Studios, Halo, Halo Wars, the Microsoft Game Studios logo, Windows, Windows Vista, Xbox, Xbox LIVE, the Xbox logos, and Xbox 360 are trademarks of the Microsoft group of companies.



Uses Bink Video.
© Copyright 1997–2009 by RAD Game Tools, Inc.



© Copyright 2006–2009 Audiokinetic Inc.
All rights reserved.



Uses Granny Animation.
© Copyright 1999–2009 by RAD Game Tools, Inc.

Halo Wars uses Havok™. © Copyright 1999–2009 Havok.com Inc. (and its Licensors). All rights reserved. See www.havok.com for details.

www.halowars.com